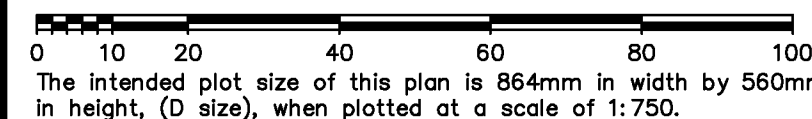


BARE LAND STRATA PLAN OF LOT A, BLOCKS 117 AND 1405, COWICHAN LAKE DISTRICT, PLAN EPP42374

BCGS 92C.090



The intended plot size of this plan is 864mm in width by 560mm in height, (D size), when plotted at a scale of 1:750.

Sheet 1 of 1 Sheets

STRATA PLAN EPS2209



LEGEND

- Found Placed
- Standard Iron Post
- Standard Capped Post
- Asph. denotes iron post in asphalt
- Rk. denotes iron post in rock
- All distances are in metres and decimals thereof
- Bearings to bearing trees are magnetic
- Grid bearings are derived from Plan EPP42374
- The UTM coordinates and estimated horizontal positional accuracy are derived from Plan EPP42374

This plan shows horizontal ground-level distances, unless otherwise specified. To compute grid distances, multiply ground-level distances by the average combined factor of 0.999584. The average combined factor has been determined based on Plan EPP42374.

Note: This plan shows one or more witness posts which are not set on the true corner(s).

Strata Plan VIS6894

Plan EPP42374

Rem. 68

Marble Bay Road

Cowichan Lake

Rem. 68

TRAVERSE TABLE OF PRESENT NATURAL BOUNDARY

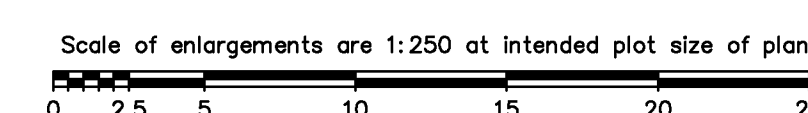
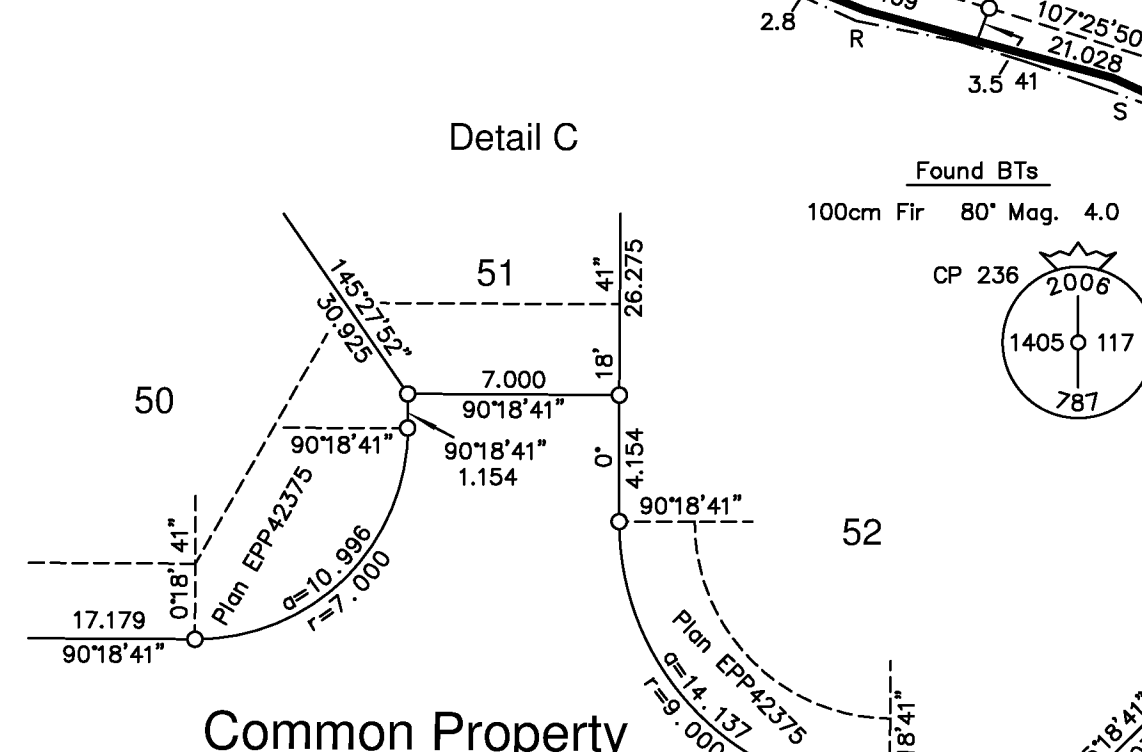
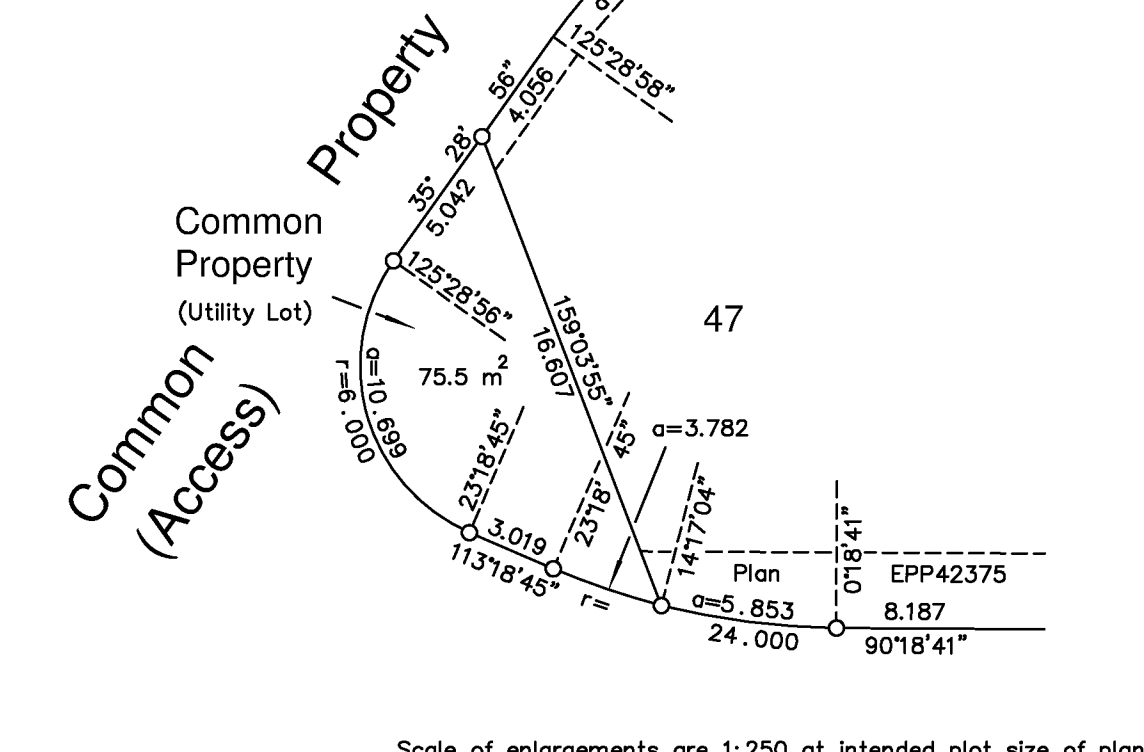
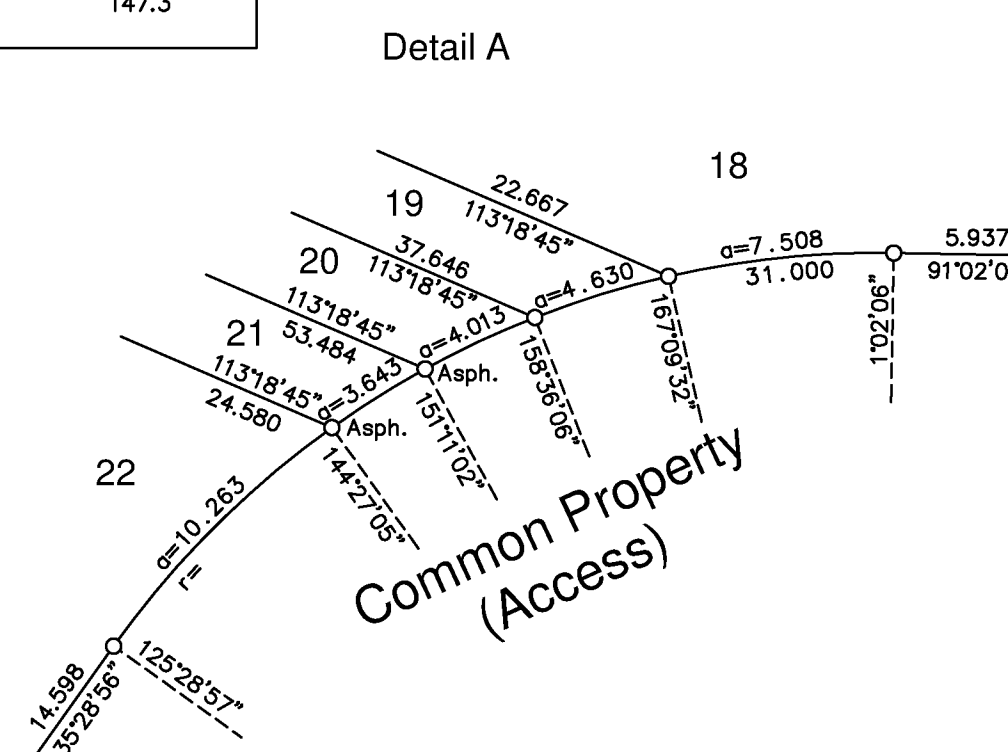
Point	Bearing	Distance
236-13	297°41'	272.6
236-14	297°30'	263.2
236-15	297°15'	256.3
236-16	297°42'	249.4
236-17	298°06'	243.0
236-18	298°35'	227.4
236-19	298°17'	221.8
236-20	298°21'	214.4
236-21	298°01'	206.3
236-22	298°10'	195.5
236-23	297°42'	181.7
236-24	298°36'	170.3
236-25	296°44'	161.0
236-26	293°06'	136.8
236-27	290°43'	131.7
236-28	291°01'	128.0
236-29	290°40'	123.1
236-30	288°50'	115.3
236-31	287°28'	106.5
236-32	286°09'	98.3
236-33	285°13'	91.0
236-34	284°01'	82.1
236-35	280°34'	69.0
236-36	279°11'	62.1
236-37	277°50'	56.8
236-38	274°29'	49.8
236-39	269°20'	40.0
236-40	265°14'	29.9
236-41	259°02'	23.6
236-42	247°30'	17.8
236-43	190°28'	12.1
236-44	152°13'	17.6
236-45	133°06'	31.7
236-46	129°51'	39.4
236-47	127°42'	46.4
236-48	128°29'	55.9
236-49	115°11'	75.8
236-50	107°57'	94.7
236-51	106°29'	101.7
236-52	108°15'	110.9
236-53	107°53'	128.8
236-54	107°13'	140.1
236-55	107°51'	147.3

Datum: NAD83(CSRS) 3.0.0.BC.1.NW
 Projection: UTM Zone10N
 UTM Northing: 5409982.55
 UTM Easting: 415935.24
 Combined SF: 0.9996355
 Convergence: -0° 51' 45"
 Estimated Horizontal Positional Accuracy: 0.10m

TRAVERSE TABLE OF TITLE BOUNDARY ACCORDING TO PLAN EPP42374

Point	Bearing	Distance
236-E	297°40'	280.0
236-F	297°03'	270.3
236-G	297°28'	255.0
236-H	298°12'	230.3
236-I	297°25'	208.7
236-J	297°46'	187.5
236-K	297°45'	182.0
236-L	298°18'	171.1
236-M	297°20'	161.0
236-N	294°57'	143.3
236-O	290°44'	134.1
236-P	287°06'	103.9
236-Q	279°30'	65.9
236-R	270°48'	39.0
236-S	247°06'	15.7
236-T	189°33'	12.0
236-U	125°45'	60.2

Natural boundary according to plan attached to document G84419 (see Plan VIP87272)



This plan lies within the jurisdiction of the Approving Officer for the Ministry of Transportation and Infrastructure 2013-05217

This plan need not comply with Section 8 of the Bareland Strata Regulations 75/78

J.E. ANDERSON & ASSOCIATES
B.C. Land Surveyors - Consulting Engineers
Victoria - Nanaimo - Parksville, B.C.
File: 24571

Civic Address for this development are unknown at this time
This plan lies within the Cowichan Valley Regional District and the Nanaimo/Cowichan Assessment Area
The field survey represented by this plan was completed on the 20th day of November, 2014.
Ryan P. Hourston, BCLS 887